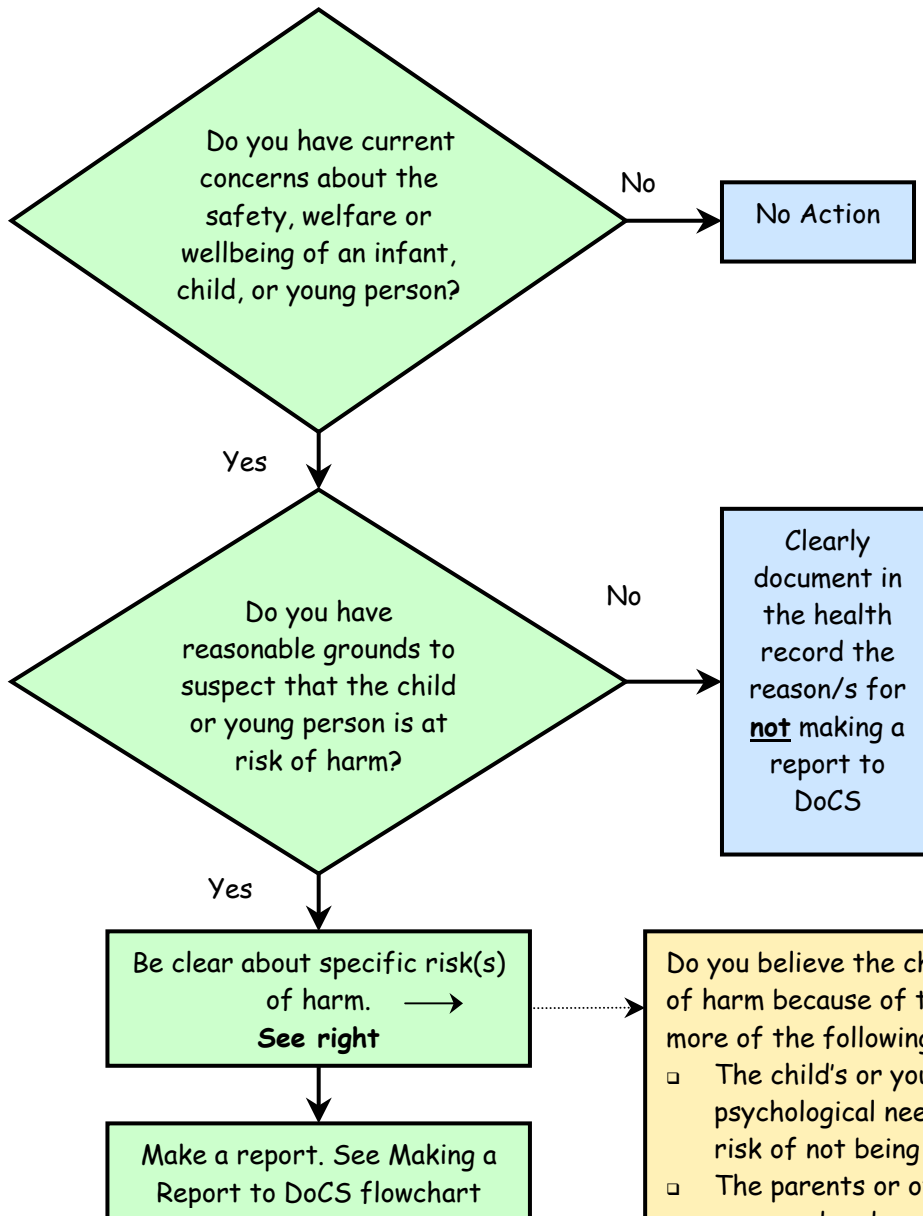


DECIDING TO MAKE A REPORT TO DOCS

Children and Young Persons (Care and Protection) Act 1998



What is 'Risk of harm'?
 Risk of harm refers to the likelihood that a child or young person may suffer physical, psychological or emotional harm as a result of what is done (physical, sexual or psychological abuse) or not done (neglect) by another person, often an adult responsible for their care. Risk of harm can also refer to young people who may suffer physical, psychological, sexual or emotional harm as a result of environmental factors (eg homelessness) or self-harming behaviours.
 NSW Interagency Guidelines for Child Protection Intervention (p76)

- Do you believe the child or young person is at risk of harm because of the presence of any one or more of the following circumstances:
- The child's or young person's basic physical or psychological needs are not being met or are at risk of not being met;
 - The parents or other caregivers have not arranged and are unable or unwilling to arrange for the child or young person to receive necessary medical care;
 - The child or young person has been, or is at risk of being, physically or sexually abused or ill-treated;
 - The child or young person is living in a household where there have been incidents of domestic violence and as a consequence, the child or young person is at risk of serious physical or psychological harm;
 - A parent or other caregiver has behaved in such a way towards the child or young person that the child or young person has suffered or is at risk of serious psychological harm.

"Determining the level of risk to children and young people from abuse and neglect requires workers to consider a range of factors. This will not always be straightforward and workers should consult with senior staff in their agency or the DoCS Helpline if they are unclear about the risk of harm that may arise from circumstance a child or young person faces."

NSW Interagency Guidelines for Child Protection Intervention (p76)

For further information refer to Section 6 of the SWSAHS Child Protection Policy & Protocols

Authors: Fairfield Hospital Social Work Service & Area Child Protection Coordinator	Version: V1.0	Date Published: January 2004	Review Date: February 2005
---	---------------	------------------------------	----------------------------